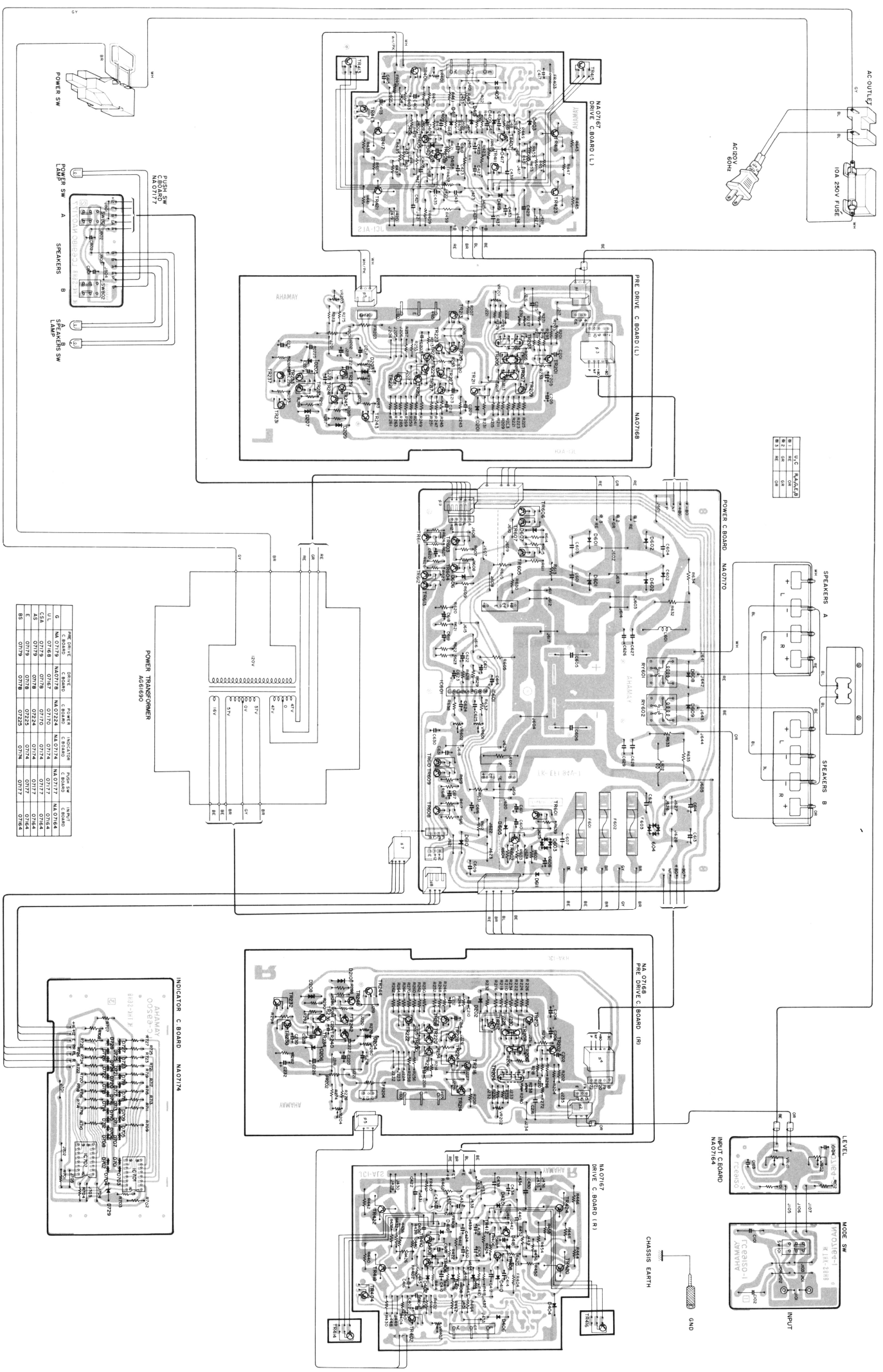


# CIRCUIT DIAGRAM (WIRING)



U.S. MARKET

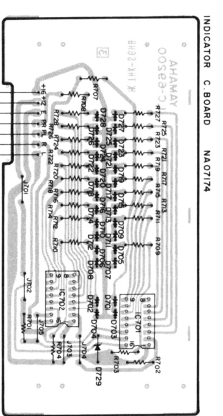
Q1	RES	10K
Q2	RES	10K
Q3	RES	10K
Q4	RES	10K

	PRE DRIVE C BOARD	DRIVE C BOARD	POWER C BOARD	INDICATOR C BOARD	SPEAKERS SW	POWER SW	INPUT C BOARD	MODE SW
Q	NA 0719	NA0716	NA0710	NA071A	NA0717	NA0716	NA0714	NA0718
U.L.	0718B	0718	0710	071A	0717	0716	0714	0718
A3	0719	0718	0710	071A	0717	0716	0714	0718
E	0719	0718	0710	071A	0717	0716	0714	0718
B5	0719	0718	0710	071A	0717	0716	0714	0718

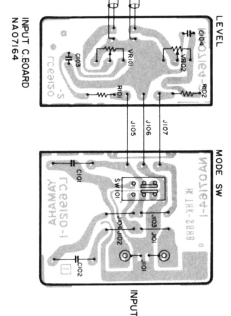
POWER TRANSFORMER AS61650

57V  
57V  
57V  
14V

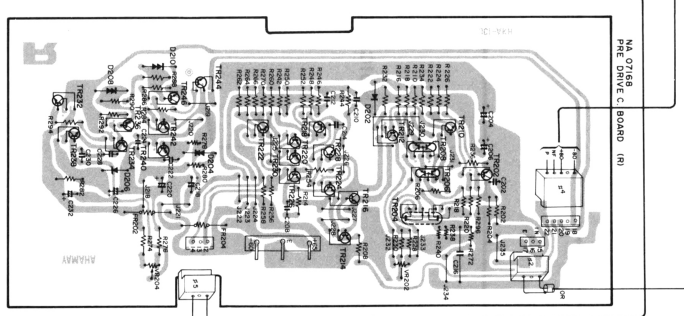
120V



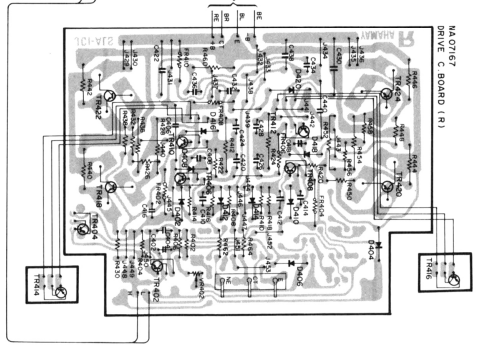
INDICATOR C BOARD NA071A



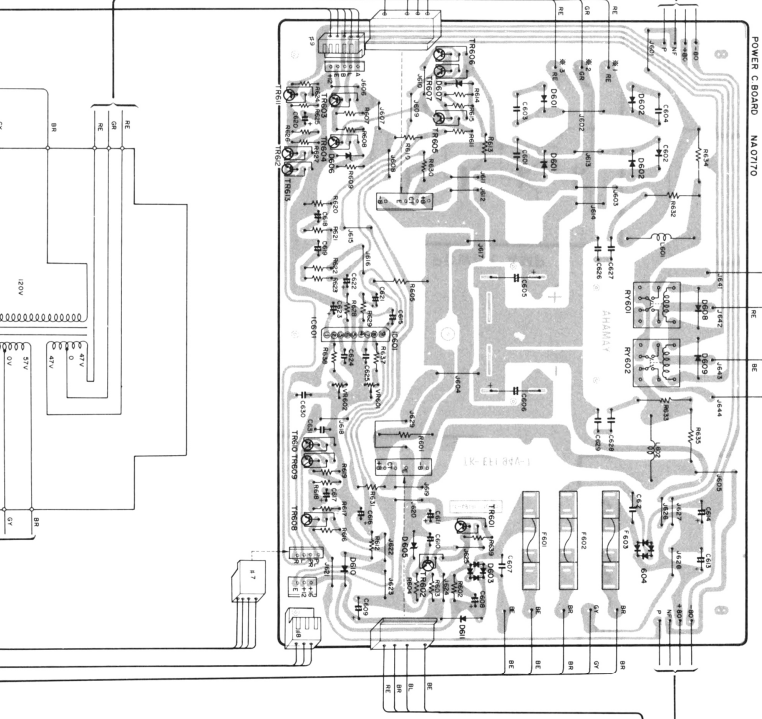
INPUT C BOARD NA0714



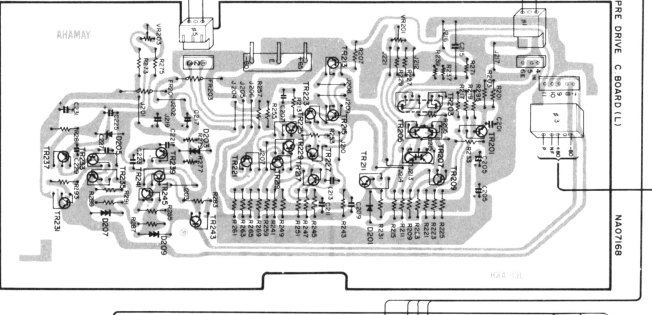
NA0716B PRE DRIVE C BOARD (R)



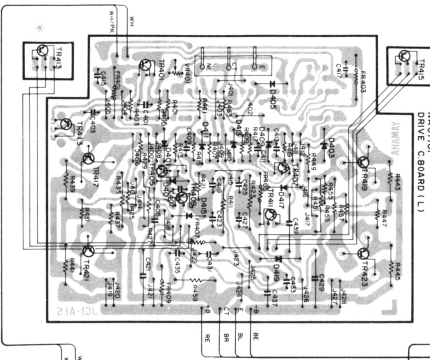
NA0716C DRIVE C BOARD (R)



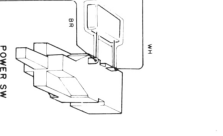
POWER C BOARD NA0710



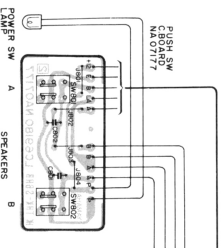
PRE DRIVE C BOARD (L)



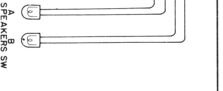
NA0716F DRIVE C BOARD (L)



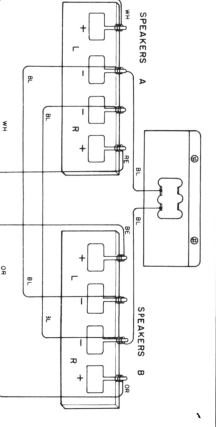
POWER SW



PUSH SW C BOARD NA0717  
SPEAKERS SW LAMP



SPEAKERS SW LAMP



SPEAKERS A

SPEAKERS B

CHASSIS EARTH

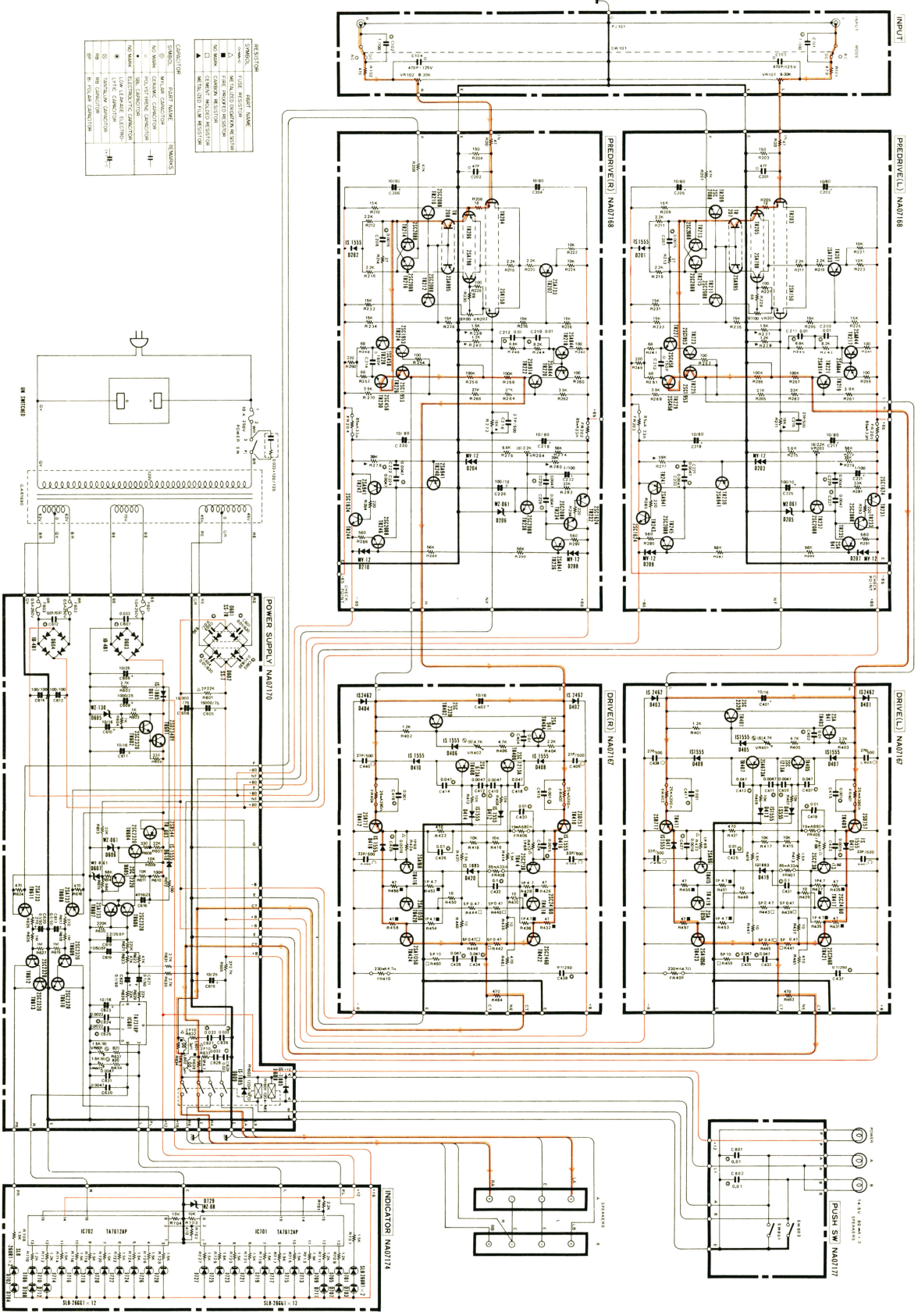
GND

LEVEL

MODE SW

INPUT

1 2 3 4 5 6 7 8 9 10



**RESISTORS**

SYMBOL	UNIT	MARKING
□	Ω	RESISTOR VALUE
○	100 Ω	RESISTOR VALUE
○	1000 Ω	RESISTOR VALUE
○	10000 Ω	RESISTOR VALUE
○	100000 Ω	RESISTOR VALUE
○	1000000 Ω	RESISTOR VALUE
○	10000000 Ω	RESISTOR VALUE
○	100000000 Ω	RESISTOR VALUE
○	1000000000 Ω	RESISTOR VALUE

**CAPACITORS**

SYMBOL	UNIT	MARKING
□	pF	CAPACITOR VALUE
○	nF	CAPACITOR VALUE
○	μF	CAPACITOR VALUE
○	mF	CAPACITOR VALUE
○	F	CAPACITOR VALUE

**NOTES**

- RESISTOR VALUES IN OHMS ARE INDICATED BY A ZERO IN THE MARKING.
- RESISTOR VALUES IN KILOHMS ARE INDICATED BY A "K" IN THE MARKING.
- RESISTOR VALUES IN MEGOHMS ARE INDICATED BY AN "M" IN THE MARKING.
- RESISTOR VALUES IN GIGAOHMS ARE INDICATED BY AN "G" IN THE MARKING.
- CAPACITOR VALUES IN MICROFARADS ARE INDICATED BY A "μ" IN THE MARKING.
- CAPACITOR VALUES IN NANOFARADS ARE INDICATED BY AN "N" IN THE MARKING.
- CAPACITOR VALUES IN PICOFARADS ARE INDICATED BY AN "P" IN THE MARKING.

